

»» Professional Pit Lifts for Heavy Duty Vehicles

Pit Lifts

Suspended



The roller bearings on the carriage permit a fast and effortless rolling of the lifts inside the pit; the roller axles are slidable on both sides by 50 mm.



The slim square design of the lifts save space and offer maximum freedom of movement inside the pit.



The standard maintenance unit with water separator and oil vapourizer on the models P-PH protects the cylinder walls against corrosion.



Threaded-screwable axles and two diagonally arranged M16 threaded holes in the base plate to fix two eye bolts for fitting the lift, permit fast and easy installation of the lift into the carriage.

Model P-H

Basic model with hand hydraulic load and no-load stroke. This model is recommended only when the lift is infrequently used.

Model P-PH

Pneumatic quick lift „up“ moves the piston rod to the lifting points in seconds, the pneumatic forced return is moving the lifting piston back rapidly to the rest position.

Model Typ P-PH-L

Based on the P-PH models, this in addition has an air motor for automatic load lifting by push button.

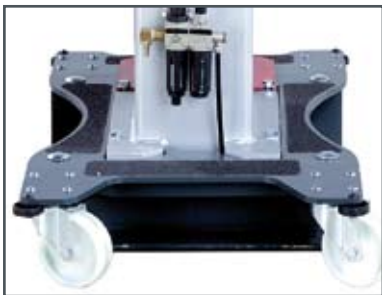
» Suspended pit lifts are available with 450 mm and 750 mm stroke. 450 mm stroke is sufficient for simple lifting jobs, 750 mm stroke is obligatory for occasional gearbox removal or working on high-lying aggregates or trailers. The carriages are adjustable; from a capacity of 16 t upwards all carriages are rigid and made to order. Individual adaptations are available. Further information you will find at our website www.pitlift-gmbh.de

Pit Lifts

Floor-Running



Roller bearings at the U- and L-carriage and 4 easy-running guide rollers at the F-carriage allow fast and effortless rolling of the lifts inside the pit.



By optimizing the carriage width of the F-version to 550 mm, even lifting points at the edge of the pit can be reached; an additional sideways movement of the lift inside the carriage is no more necessary.



The sensitive operation by foot pedal permits the accurate approach of the lifting cylinder to the load; effortless quick lift and load stroke by means of hydro-pneumatic pedal switches; hands are free for working on the vehicle.



Hard-chromium plated piston rod and pump piston ensure long durability of the lift.

»»» Carriage F

fully mobile in all directions; when not in use, these models can easily be moved out of the way into a storage room. Optimal use only possible on even floors.

»»» Carriage U and L

The lift is running on rails with sideways adjustment over the full width of the carriage. Also suitable for use on uneven floors or pit floors with gratings. The space-saving square design permits ideal lateral adjustment of the lift.

»»» Special carriages

running on a rail at the floor grade area or carriages with specific dimensions on request.

»» Floor-running telescopic lifts are hydro-pneumatic operated that is rapid approach of the piston rod up to the lifting point and forced return back to the rest position, automatic load lifting by air motor. The lifts are basically equipped with maintenance unit. Due to the low construction height these telescopic lifts are ideal for gearbox removals but also suitable for all kind of repair work. Learn more: www.pitlift-gmbh.de

Systems Support

Support bridge P-ASB

Consisting of support bridge with extension tubes. The vehicle is raised with the pit lift and safely lowered and supported on the extension tubes with the support bridge. The pit lift can be used elsewhere in the pit. The continuous cut-out in between the supporting beams permits ideal lateral adjustment of the lift.



Support bridge P-ASBT

Consisting of support bridge with traverse for safe 2-point support of vehicles. Wooden blocks ensure a fast and safe lowering of the traverse onto the supporting bridge (under load).



Traverse P-AT

Any lifting points can be reached as the sliders of the basic version ATP are adjustable in width as well as in height. The flat design permits resting of the traverse inside the bridge without any negative effects when passing over the pit.



Support bridge P-ASB-M

Flexible use with or without traverse. The open design permits a fast driving in and out of the lift with fitted load carrying devices.

Support bridge P-AT-NB

The traverse P-AT-NB is designed for safe supporting of vehicles with offset lifting points (low-floor buses).

Traverse P-AT-BW

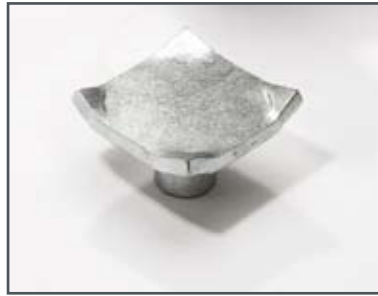
The extremely wide adjustment range of 318-1318 mm makes this traverse ideal for supporting buses, municipal or military vehicles.

» Support systems are indispensable for efficient working. For safety reasons supports should always be placed under lifted vehicles. The lift can meanwhile be used elsewhere. These support systems can be adapted to any pit profiles and lifts never mind which make. Further information you will find at our website www.pitlift-gmbh.de

Accessories



Gearbox support P-GP
700x500 mm, adjustment angle up to 45°, including tightening straps



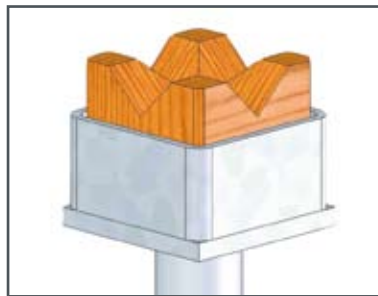
Support plate P-PST
Available in different sizes



Axle traverse P-AK
Safe 2-point support



Spacer pieces P-HV
For shifting of the stroke



Wooden support P-HP
Gentle lifting of loads



Extension tubes P-VR
For lowering traverse onto the support bridge



Wooden block P-HK
For lowering traverse onto the support bridge



Maintenance unit P-WE
Water separator and oil vapourizer



Small support plate P-PS



pitlift GmbH
Krebspfad 22 • 75177 Pforzheim • Germany
Phone +49/7231/5893756 • Fax +49/7231/5893758
Mobile +49/151/23017818
eMail info@pitlift-gmbh.de
www.pitlift-gmbh.de

» A pit lift without accessories is not complete. The combination of pit lift with support system and accessories permits lifting of nearly all vehicles.

Technical Data

Model Capacity t Stroke

hand-hydraulic pit lifts, suspended version

450 mm stroke

P-H 11/450	11,0	450
P-H 14/450	14,5	450
P-H 16/450	16,5	450
P-H 20/450	20,0	450

750 mm stroke

P-H 11/750	11,0	750
P-H 14/750	14,5	750
P-H 16/750	16,5	750
P-H 20/750	20,0	750

hydraulic-pneumatic pit lifts, suspended version

450 mm stroke

P-PH 11/450	11,0	450
P-PH 14/450	14,5	450
P-PH 16/450	16,5	450
P-PH 20/450	20,0	450

750 mm stroke

P-PH 11/750	11,0	750
P-PH 14/750	14,5	750
P-PH 16/750	16,5	750
P-PH 20/750	20,0	750

hydraulic-pneumatic pit lifts with air motor, suspended version

450 mm stroke

P-PH-L 11/450	11,0	450
P-PH-L 14/450	14,5	450
P-PH-L 16/450	16,5	450
P-PH-L 20/450	20,0	450

750 mm stroke

P-PH-L 11/750	11,0	750
P-PH-L 14/750	14,5	750
P-PH-L 16/750	16,5	750
P-PH-L 20/750	20,0	750

floor-running pit lifts, hydraulic-pneumatic with air motor

1.200 mm stroke

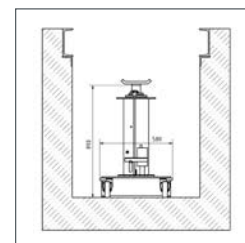
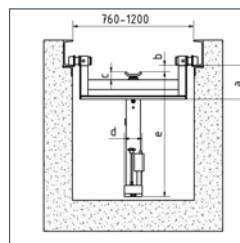
P-THP 14/1200F	14,5	1.200
P-THP 14/1200U	14,5	1.200
P-THP 14/1200L	14,5	1.200

capacity	a	b	c	d	e
suspended pit lifts, 450 mm stroke, 11-20 t capacity					
11,0	157	95	35	152	686
14,5	157	115	35	152	686
16,5	157	115	35	178	686
20	157	147	47	178	698

suspended pit lifts, 750 mm stroke, 11-20 t capacity					
11,0	287	35	35	152	1036
14,5	287	15	35	152	1036
16,5	287	15	35	178	1036
20	287	-17	47	178	1048

capacity	T	B	H
floor-running pit lifts, hydraulic-pneumatic with air motor, 1.200 mm stroke			
14,5	750	550	890
14,5		custom-made	890
14,5		custom-made	890

Pictures of the controls



Subject to change without notice

» We will make recommendations on the layout of your pit that will best fit your requirements. The pit is the most economical way to work and is dramatically less expensive than all other possibilities for working underneath a vehicle. Any needed pit sections are available on request.